

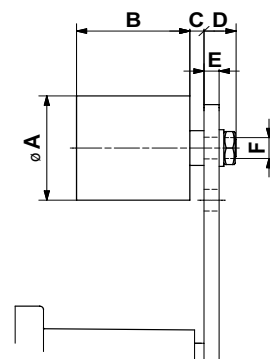
Selection table

	Identification	Characteristics	Working temperature	Details	Illustration	
Standard tensioner devices	SE Standard component	Steel parts ROSTA blue painted. Rubber quality Rubmix 10.	Housing and inner core made out of steel.	-40° to +80° C	Page 4.6	
	SE-G Oil resistant	Steel parts galvanized. Rubber quality Rubmix 20. Marked with yellow dot.		-30° to +90° C	Page 4.6	
	SE-W Heat resistant	Steel parts ROSTA blue painted. Rubber quality Rubmix 40. Marked with red dot. Tension force 40% less than SE.		+80° to +120° C max.	Page 4.6	
Additional tensioner devices	SE-R Reinforced lever arm	Arm and inner core especially welded for use on combustion engines and compressors. Steel parts ROSTA blue painted. Marked with white ring.	Housing and inner core made out of steel, inserts Rubmix 10.	-40° to +80° C	Page 4.6	
	SE-I Stainless steel	For the use in food- and pharmaceutic industries. Material: GX5CrNi19-10. Exception: SE-I 40 made out of X5CrNi18-10.			Page 4.6	
	SE-B Boomerang®	For the tensioning of very long chain and belt drives (triple compensation). Steel parts ROSTA blue painted.			Page 4.7	
	SE-F Front mounting device	For installations on blind-hole frames (fixation from the front only). Steel parts ROSTA blue painted. Hex socket screw quality 12.9.			Page 4.7	
	SE-FE Front mounting device	For installations on blind-hole frames (fixation from the front only). Steel parts black painted. Hex socket screw quality 12.9. Especially designed for engine applications.	see page 4.7	Page 4.7		
Accessories chain drives	Sprocket wheel set N	Allows accurate positioning of relevant chain track. Ball-bearings 2Z/C3, permanently lubricated.	-40° to +100° C	Page 4.8		
	Sprocket wheel N					
	Chain rider set P	For double sided use. Max. allowed chain speed 1.5 m/sec. Material: POM-H.	-40° to +100° C	Page 4.9		
	Chain rider P					
Accessories belt drives	Tensioning roller R	Material: PA 6. Ball-bearings 2Z/C3, permanently lubricated.	-35° to +100° C	Page 4.10		
	Tensioning roller light RL	Material: PA 6. Ball-bearings 2Z/C3, permanently lubricated.	-35° to +80° C	Page 4.10		

Further information to customized elements and installation examples as from page 4.12.

Accessories belt drives

Tensioning roller Type R and RL



Tensioning roller standard type R (blue)

Type	Art. No.	Max. speed [rpm]	Max. belt width	A	B	C	D	E max.	F	Torque hex nut [Nm]	Size SE	Weight [kg]
R 11	06 580 001	8000	30	30	35	2	14	5	M8	25	11	0.08
R 15/18	06 580 002	8000	40	40	45	6	16	7	M10	20	15/18	0.17
R 27	06 580 003	6000	55	60	60	8	17	8	M12	35	27	0.40
R 38	06 580 004	5000	85	80	90	8	25	10	M20	165	38	1.15
R 45	06 580 005	4500	130	90	135	10	27	12	M20	165	45	1.75

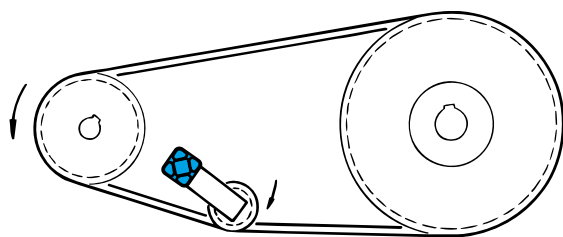
Tensioning roller light type RL (black). Designed for light-duty drives.

Type	Art. No.	Max. speed [rpm]	Max. belt width	A	B	C	D	E max.	F	Torque hex nut [Nm]	Size SE	Weight [kg]
new RL 11	06 580 901	6000	30	30	35	3	19	10	M8	25	11	0.08
new RL 15/18	06 580 902	6000	40	40	45	6	21	9	M10	49	15/18	0.17
new RL 27	06 580 903	4500	55	60	60	8	22	8	M12	86	27	0.50

Instructions for belt drives

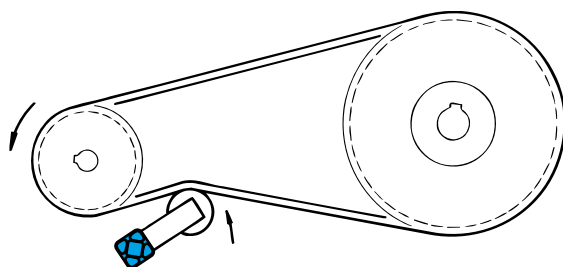
a) Modalities of tensioning

See also complementary mounting instructions on page 4.5.



Tensioning from "inside" of the belt drive with grooved pulley

- Installation in slack span of the belt drive, make sure that the belts are maintaining sufficient contact-arc on the driver- and driven-pulley.
- By extremely long centre distances between driver and driven pulley it is recommendable to use on the tensioner a deep-grooved pulley to avoid excessive slack beating.



Tensioning with flat roller on belt back

- The diameter of the flat tensioning roller should at least measure $\frac{2}{3}$ of the diameter of the smallest pulley in the drive.
- The width of the tensioning roller should be at least 20% wider than the overall width of the belt set.
- Installation on the belt back in the slack span, make sure that the belts are maintaining sufficient contact-arc on the driver and driven pulley.

Strained Applications!

A few examples:



Tensioner Devices



ROSTA 
swinging solutions

ROSTA AG
CH-5502 Hunzenschwil
Phone +41 62 889 04 00
Fax +41 62 889 04 99
E-Mail info@rosta.ch
Internet www.rosta.com

Changes regarding contents reserved.
Any reprint, also in extracts, requires our explicit and confirmed approval.

T2016.910

Administrative and Technical Information

1. Guidance, services and offers

Please contact your local ROSTA representative listed in our representatives list on the back of the catalogue if you have any questions or concerns.

We require a full list of technical specifications including any available sketches and data sheets for the preparation of an appropriate offer. This information makes it possible for us to determine whether a standard or custom element is the most cost-effective solution for you. For complex applications, our representative or the home office will send you a questionnaire about the exact specifications for what you need.

Terms and conditions for payments and deliveries are included with our offer or available on our website at www.rosta.com → Company → General Terms.

2. Orders and deliveries

Please include the offer number on your order along with the exact quantity, product name and number. Please send your order to your local ROSTA representative.

3. Availability

Most of the standard products listed in our catalogue are available from stock through your local representative or directly from ROSTA AG.

Custom pieces for a specific customer requirement are produced and delivered as specified in your order confirmation. The delivery time for special custom pieces can be reduced by signing a call order agreement (make-and-hold-order) with ROSTA AG. Please contact us if you would like to discuss this.

4. Technical information

Please observe the capacity limits for our elements as specified in the catalogue. If you are in doubt, please contact us or your ROSTA representative.

Please follow the assembly instructions detailed in the catalogue. Make sure that your assembly workers are instructed correctly. If you have any questions, please contact us or your ROSTA representative.

Assembling elements: To attach our elements or mounts, please always use the largest dimensioned standard machine bolts possible with a minimum strength class of 8.8 that fit into the drilled holes in the elements or attachment clamps. Use an ISO 898 table or your screw supplier's guidelines for the maximum tightening torque.

If in doubt, control your bolt attachments using the VDI Guidelines 2230.

Use DIN 125A stamped washers to attach housings with unworked drilled holes in the casting (for example AB 50) or oblong holes (for example MB supports).

5. Proviso

This catalogue and our other technical information are intended solely for your orientation and information; they may not be construed as absolutely binding in any way. We ask that you adapt the assembly and use of our products in a way suited to the prevailing conditions and situation.

The reproduction of this document in full or in part may only be done with our expressed written permission.

The leading manufacturer of torsional rubber springs



SUBSIDIARIES

Australia www.rostaaustralia.com.au **Canada** www.rosta.ca **China** www.rostachina.com
Germany www.rosta.de **Italy** www.rostaitalia.com **USA** www.rosta.com

DISTRIBUTORS

Argentina heuchert@ciudad.com.ar **Austria** www.haberkorn.com **Belgium/Luxemburg** www.atbautomation.eu
Brazil www.atibrasil.com.br **Chile** www.riosan.cl **Czechia** www.rupet.eu **Denmark** www.jens-s.dk **Finland** www.sks.fi
France www.rosta.com **Great Britain** www.kobo.co.uk **Greece** www.alexandris.com **Iceland** www.falkinn.is
India www.technotalent.in **Japan** www.mikipulley.co.jp **Lithuania/Latvia** www.techvitas.lt
Malaysia www.masterjaya.com.my **Netherlands** www.atbautomation.eu **New Zealand** www.saecowilson.co.nz
Norway www.jens-s.no **Peru** www.grupo-isc.com **Philippines** www.severosyling.com **Poland** www.archimedes.pl
Portugal www.april.pt **Russia** www.fam-drive.ru **Singapore** henry@smcomponent.com **Slovenia** www.m-trade.si
South Africa www.orangevmc.co.za **South Korea** www.sewonworld.co.kr **Spain** www.tracsa.com
Sweden www.kontima.se **Thailand** www.virtus.co.th **Turkey** www.entatek.com



Changes regarding data reserved.
Any reprint, also in extracts, requires
our explicit and confirmed approval.



ROSTA AG

Hauptstrasse 58
CH-5502 Hunzenschwil

Phone +41-62-889 04 00
Fax +41-62-889 04 99
E-Mail info@rosta.ch
Internet www.rosta.com

ROSTA



T2016.914