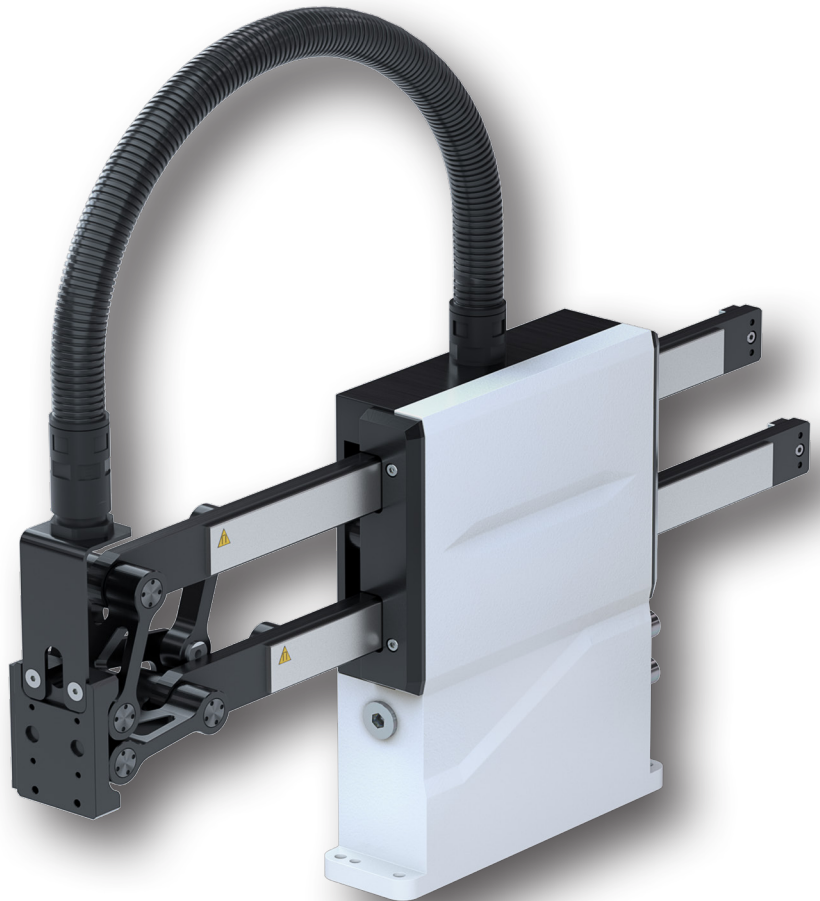


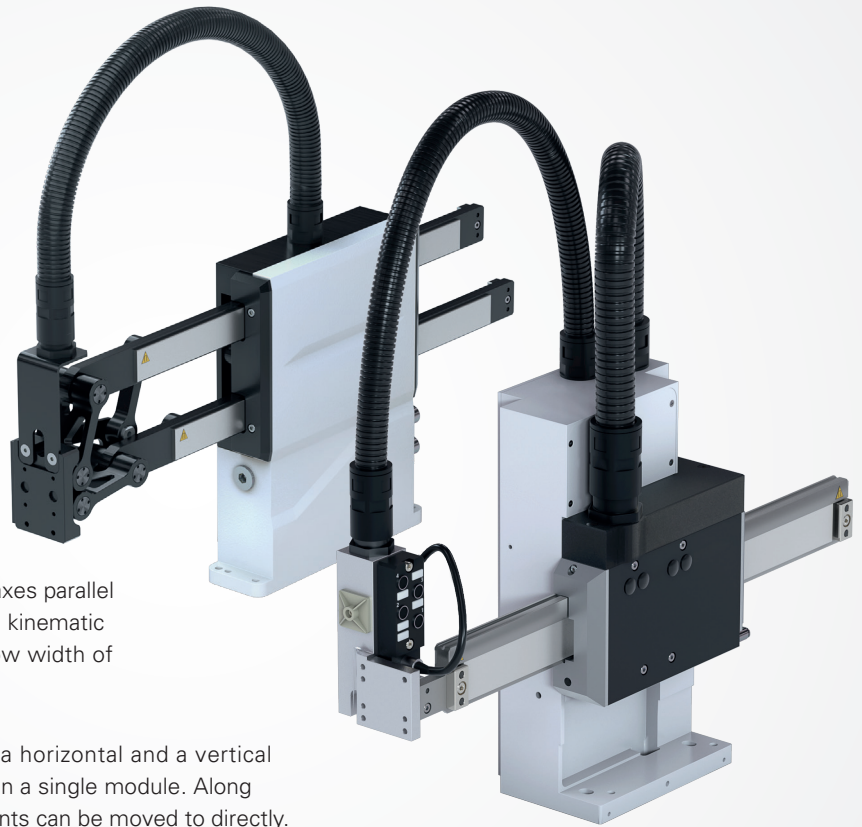


PICK & PLACE HP



HP

HANDLING MODULES | HP PICK & PLACE



Pick & Place HP 70: two horizontal linear axes parallel on top of each other, connected through a kinematic unit. Because of the construction a narrow width of only 60 mm is possible.

Pick & Place HP 140: a horizontal and a vertical linear axis integrated in a single module. Along these two axes all points can be moved to directly.

HP PICK & PLACE: THE DIRECT ALTERNATIVE

CERTIFICATION AS UL RECOGNIZED COMPONENT

The WEISS Pick & Place units are optionally available in the „**UL Recognized**“ version.

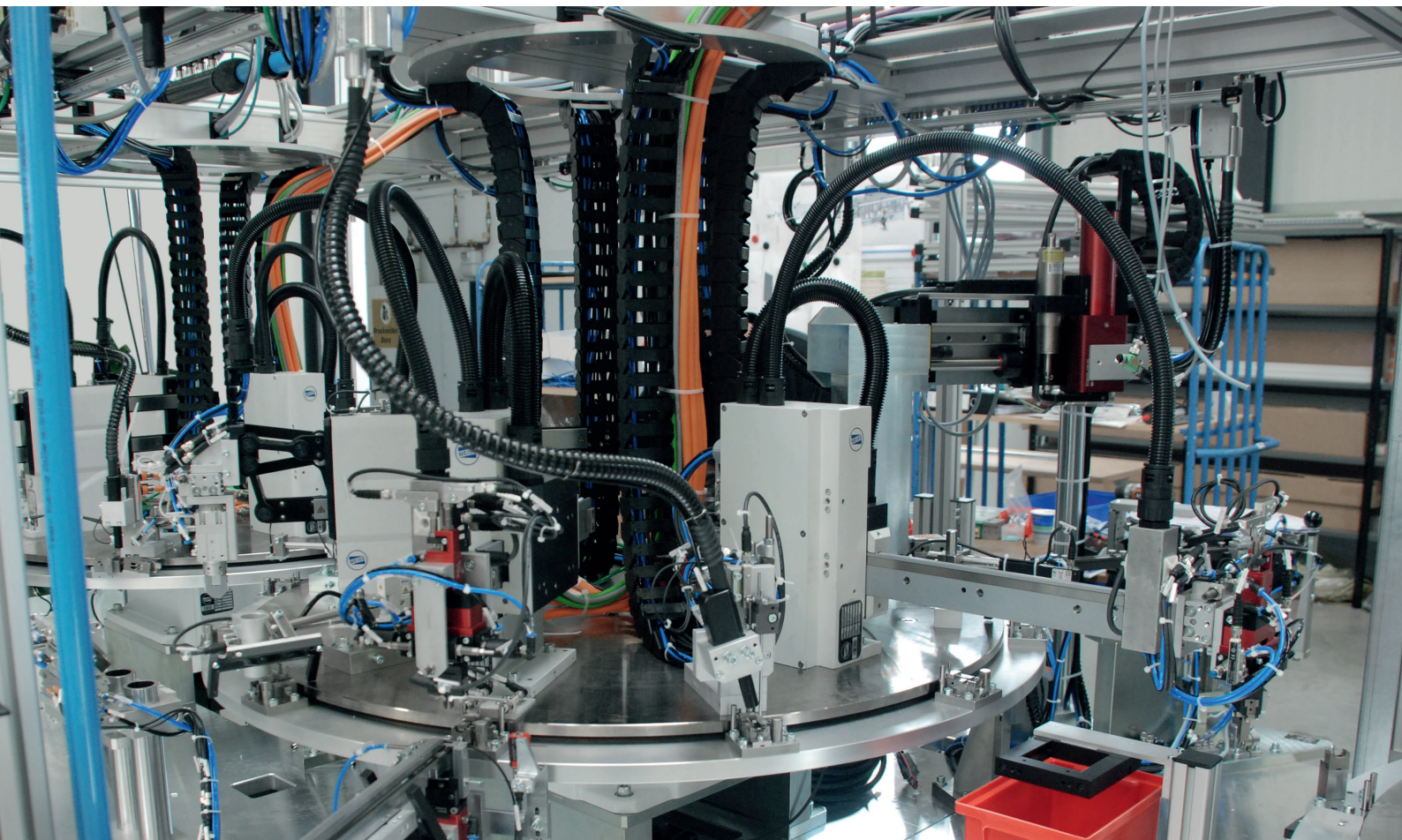


FREELY AND INTUITIVELY PROGRAMMABLE

W.A.S. 2 – WEISS Application Software: secure and fast commissioning with free-of-charge user software.



Automated assembly system for electromechanical sensors from UBH Mechanical Engineering: eleven Pick & Place units achieve the required repeat accuracy of 0.02 mm – at a cycle time of 1.5 s.



Whether HP 140 or HP 70: The Pick & Place from WEISS works with two linear axes and therefore profit from all advantages of a direct drive: rapid dynamic performance, free user-programmability, minimal wear and highest precision. The HP overcomes limits of traditional pneumatic systems regarding variability, dynamic performance and efficiency.

ADVANTAGES

- Extremely high dynamic performance thanks to direct drive
- Ready-to-install complete solution
- Free programmability
- Permanent feedback of position, process forces, speed (adjustable control circuit)
- Low maintenance costs
- Significantly lower energy consumption, in particular in comparison with pneumatic systems
- Very compact and slim design, offering greater flexibility for integration and assembly of the machine
- W.A.S. 2 – WEISS Application Software for simple commissioning
- Impressive price-performance

GENERAL INFORMATION

- All motors are equipped with overtemperature protection (PTC)
- Standard with safe encoder mounting (functional safety)
- HP140 is only suitable for horizontal mounting positions
- Flexible mounting position for the HP70

OPTIONS

- Manual or automatic lubrication
- For efficient cable and tube management, the toolconnector is available in different versions
- Optional with clamping unit
- Absolute measuring systems
- Optionally as "UL Recognized" version

HP 70T

TECHNICAL DATA

U	Voltage range:	200-480 V _{AC rms}
a_{Max}	Max. acceleration:	40 m/s ²
v_{Max}	Max. speed:	4 m/s
F_{N mot}	Nominal force:	65 N
F_{P mot}	Peak force:	180 N
s_{h Max}	Horizontal stroke:	125, 225, 325 mm
s_{v Max}	Vertical stroke:	70 mm
m	Weight:	9 kg
	Repeat accuracy:	0.005 mm
m_{rec}	Max. recommended load:	1 kg

LOAD DATA

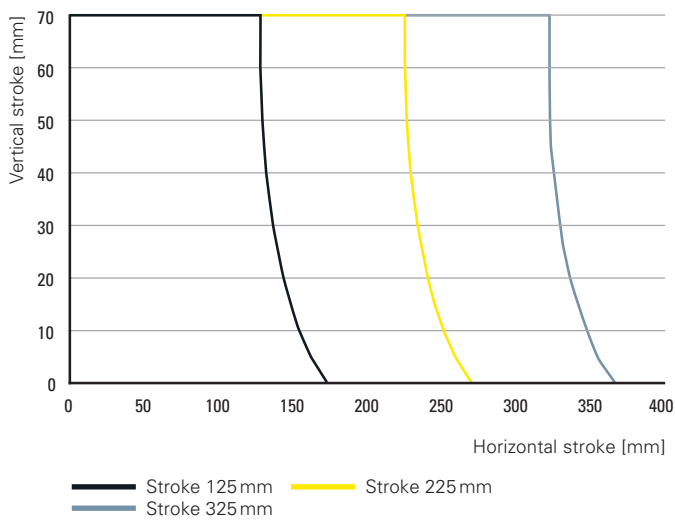
M_{X stat}	Max. static moment about the X-axis:	61 Nm
M_{Y stat}	Max. static moment about the Y-axis:	41 Nm
M_{Z stat}	Max. static moment about the Z-axis:	120 Nm
F_{Y stat}	Max. static force in the Y-axis:	100 N
F_{Z stat}	Max. static force in the Z-axis:	100 N

Please do not exceed the given forces – especially during pick or place operations. The accuracy is given for constant temperature and without outside forces.

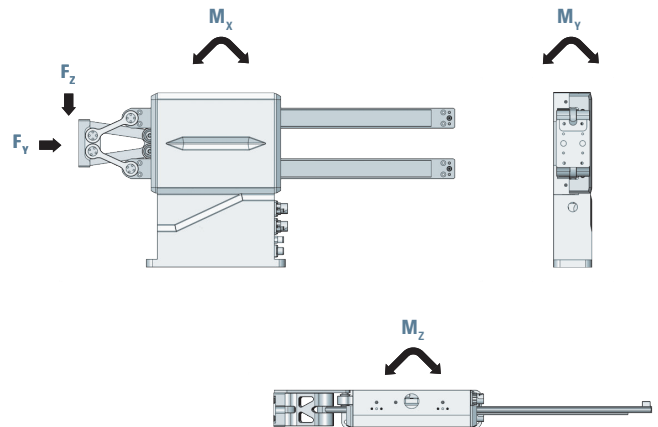
ENCODER

Balluff	sin/cos
Balluff	BISS
Balluff	SSI

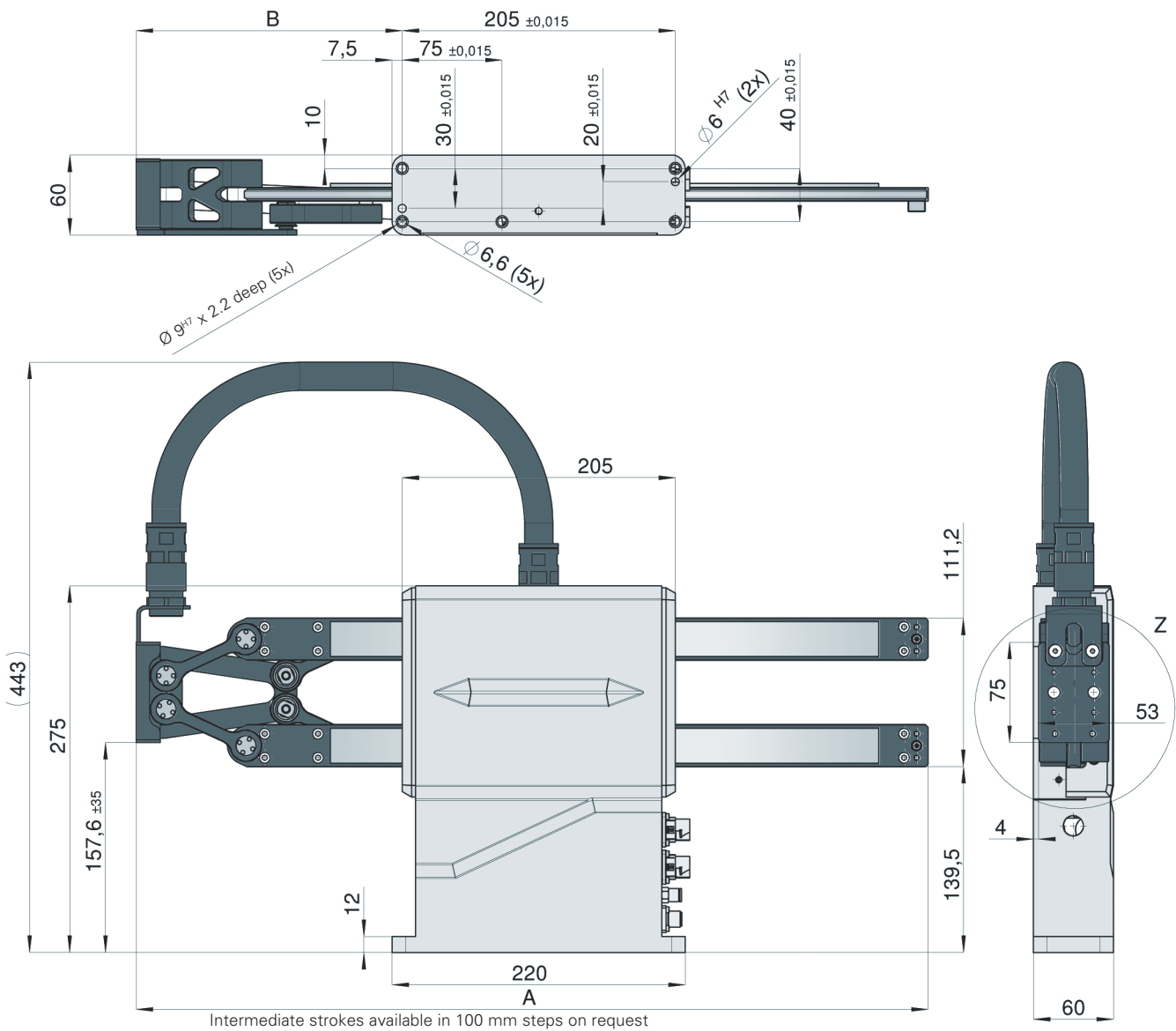
MECHANICAL STROKE



LOAD DATA

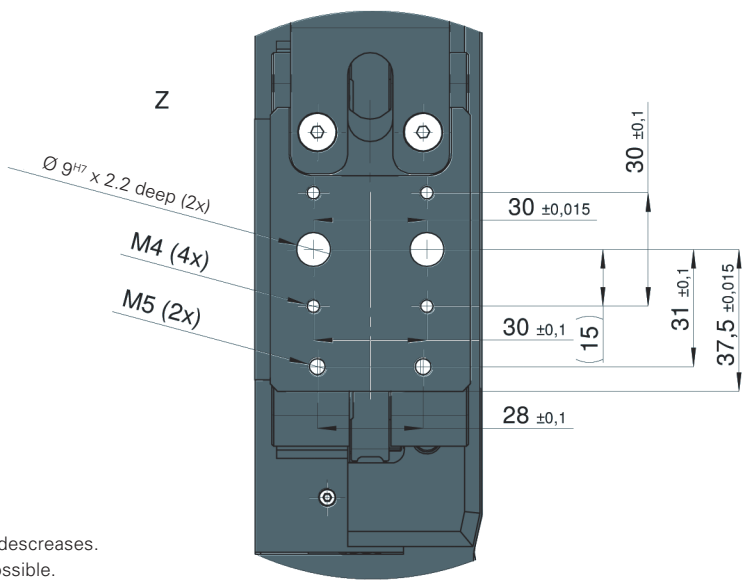


DIMENSIONS



Horizontal stroke	A	B min.	B max.
125 mm	497.5 mm	120.5 mm	287.9 mm
225 mm	594.5 mm	120.5 mm	384.5 mm
325 mm*	691.1 mm	120.5 mm	481.1 mm

*Note: As the Z-stroke increases, the maximum possible Y-Stroke decreases. With maximum Z-stroke, only a maximum Y-stroke of 320mm is possible.



STANDARD FEATURES: SAFE ENCODER MOUNTING, ALUMINIUM HOUSING COLOR RAL 7035 & BLACK, LUBRICATION CONNECTION FOR MANUAL LUBRICATION, PLUG-IN CONNECTION FOR AUTOMATIC LUBRICATION AND CENTERING SLEEVES INCLUDED

Attribute	Value	HP70	225	SSI20B	WCL	PTC
Typ	HP70					
Horizontal stroke in mm	125 225 325					
Measuring system	SIC01 = magnetic, incremental, magnetisch SSI20B = magnetic, absolute SSI 20Bit (Bosch) SSI20S = magnetic, absolute SSI 20Bit (Siemens) BISS20 = magnetic, absolute BiSS 20Bit (B&R)					
Clamping	NCL = without clamping WCL = with clamping					
Toolconnector	NTC = without Toolconnector ETC = only empty Toolconnector CTC = Toolconnector with 2 integrated signal cables PTC = Toolconnector with 4 integrated signal cables and 2 integrated pneumatic valves including routed pneumatic tubes					

HP 140T

TECHNICAL DATA

U	Voltage range:	200-480 V _{AC rms}
a_{Max}	Max. acceleration:	40 m/s ²
v_{Max}	Max. speed:	4 m/s
F_{N mot}	Nominal force:	80 N (Y), 150 N (Z)
F_{P mot}	Peak force:	240 N (Y), 370 N (Z)
s_{h Max}	Horizontal stroke:	148 (160), 203 (215), 258 (270), 288 (300), 388 (400) mm*
s_{v Max}	Vertical stroke:	65, 100, 150 mm
m	Weight:	11-18 kg
	Installation position:	horizontal
	Repeat accuracy:	0.005 mm
m_{rec}	Max. recommended load:	3 kg

*Safe encoder mounting reduces the horizontal stroke about 12mm

LOAD DATA

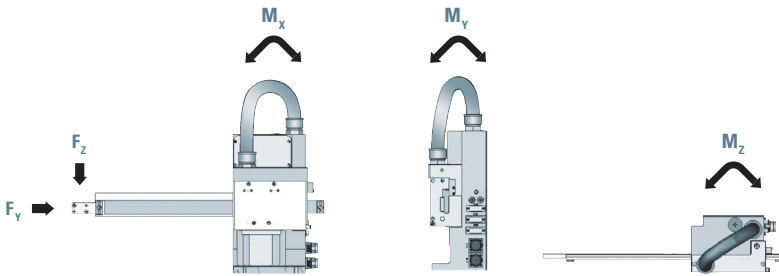
M_{X stat}	Max. static moment about the X-axis:	49 Nm
M_{Y stat}	Max. static moment about the Y-axis:	15 Nm
M_{Z stat}	Max. static moment about the Z-axis:	36 Nm
F_{Y stat}	Max. static force in the Y-axis:	100 N
F_{Z stat}	Max. static force in the Z-axis:	100 N

Please do not exceed the given forces – especially during pick or place operations. The accuracy is given for constant temperature and without outside forces.

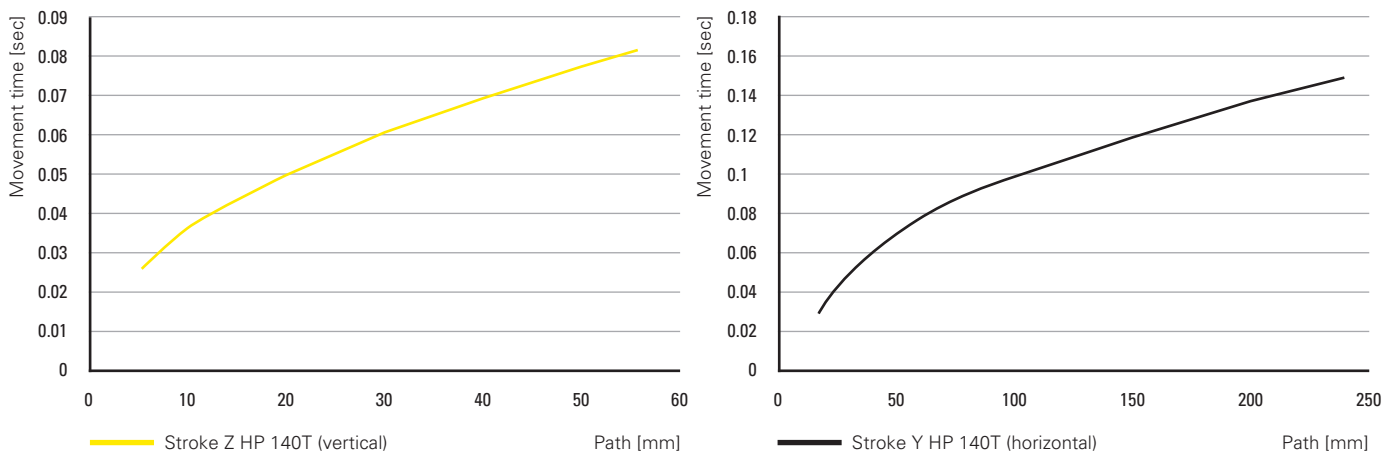
ENCODER

Balluff	sin/cos
Balluff	BISS
Balluff	SSI

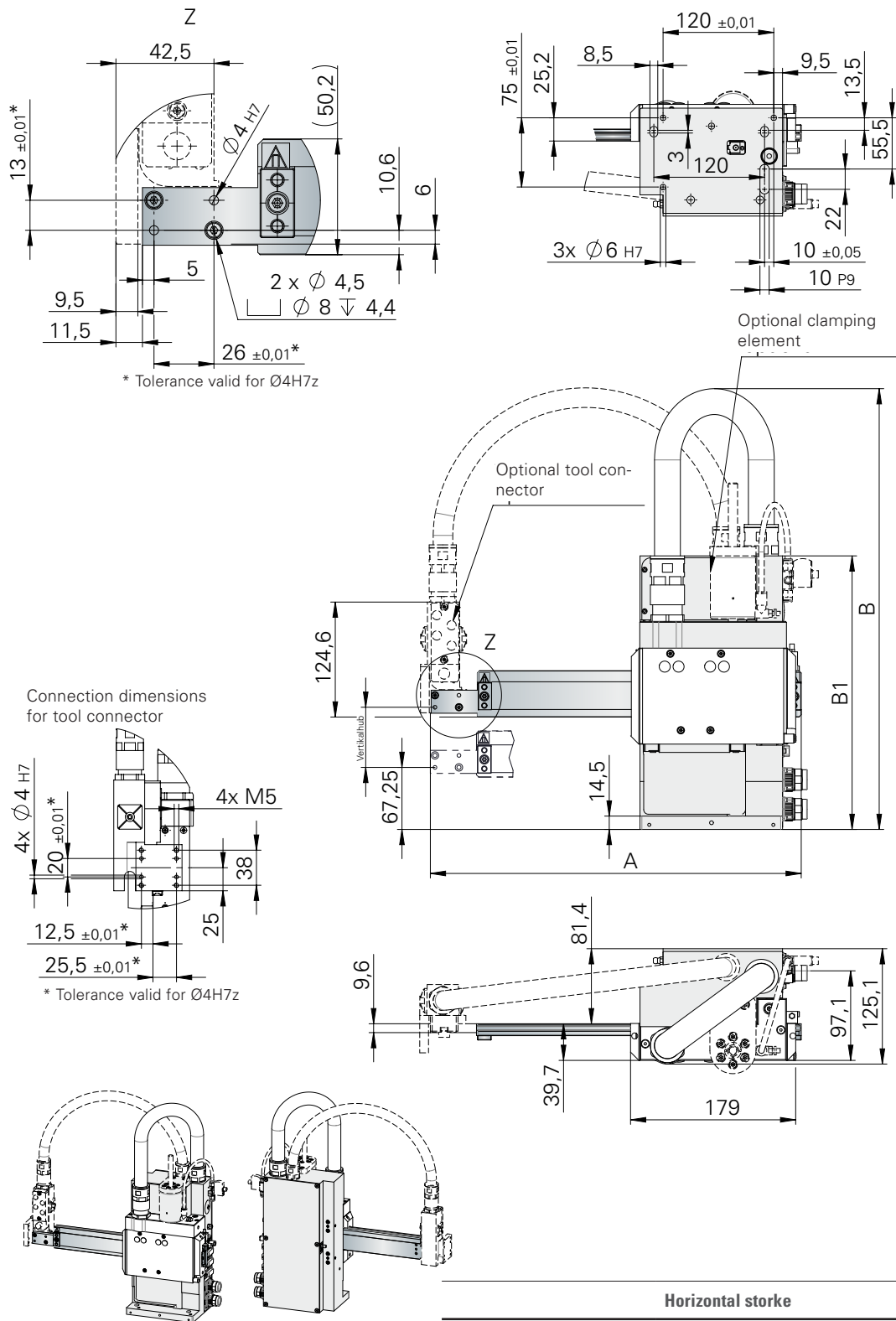
LOAD DATA



TIMING DIAGRAM To help calculate the exact cycle time, please forward your proposed sequence.



DIMENSIONS



Vertical stroke			Horizontal stroke		
Working stroke	B	B ₁	Working stroke with safe encoder mounting	Working stroke without safe encoder mounting	A
65	478	296,5	148	160	402
100	581	371,5	203	215	459
150	653	471,5	258	270	512
			288	300	542
			388	400	642

STANDARD FEATURES: SAFE ENCODER MOUNTING, ALUMINIUM HOUSING COLOR RAL 7035 & BLACK, LUBRICATION CONNECTION FOR MANUAL LUBRICATION, PLUG-IN CONNECTION FOR AUTOMATIC LUBRICATION AND CENTERING SLEEVES INCLUDED

Attribute	Value	HP140	65	-	285	SSI20B	S	WCL	PTC
Typ	HP140								
Vertical stroke in mm	65 100 150								
Horizontal stroke in mm	Depending on the selection of encoder mounting 148 (S) 160 (N) 203 (S) 215 (N) 258 (S) 270 (N) 288 (S) 300 (N) 388 (S) 400 (N)								
Measuring system	SIC01 = magnetic, incremental, magnetic SSI20B = magnetic, absolute SSI 20Bit (Bosch) SSI20S = magnetic, absolute SSI 20Bit (Siemens) BISS20 = magnetic, absolute BiSS 20Bit (B&R)								
Encoder mounting	N = no safe encoder mounting S = safe encoder mounting								
Clamping	NCL = without clamping WCL = with clamping								
Toolconnector	NTC = without Toolconnector ETC = only empty Toolconnector CTC = Toolconnector with 1 signal cable incl. sensor-actor box PTC = Toolconnector with 1 signal cable incl. sensor-actor box and 2 integrated pneumatic valves and routed pneumatic tubes								



INSPIRING PEOPLE **GREAT SOLUTIONS**

WEISS GMBH

Siemensstrasse 17 74722 Buchen Germany
Phone +49 6281 5208-0 Fax +49 6281 5208-99
info@weiss-world.com
www.weiss-world.com

Disclaimer

The WEISS product catalogue has been compiled with the greatest of care. Nonetheless, the details given are only for non-binding general information and do not replace in-depth individual consulting for a purchase decision. WEISS GmbH assumes no liability for the correctness, completeness, quality of the information provided nor that it is up to date. Liability for material defects and deficiencies in title pertaining to the information, in particular for its correctness, freedom from third-party intellectual property rights, completeness and usability is excluded – except in cases of intent or fraud. WEISS GmbH shall be freed from all other liability, unless it is mandatorily liable pursuant to the German Product Liability Law for intentional or fraudulent action or for a breach of significant contractual duties. Liability due to a breach of significant contractual duties is restricted to typical, foreseeable damages – except in cases of intent or gross negligence

Copyright

© WEISS GmbH, Buchen, Germany. All rights reserved. All content such as texts, images and graphics, as well as arrangements thereof, are subject to protection by copyright and other laws on the protection of intellectual property. Content of this catalogue may not be copied, distributed or changed for commercial purposes. Some content is further subject to third-party copyright. The intellectual property is protected by various laws such as the industrial property rights, trademark rights, and copyright of WEISS GmbH.