



Single/One Cable or
Two Cable Connections
IP67 or IP69K

FOOD & BEVERAGE / PACKAGING

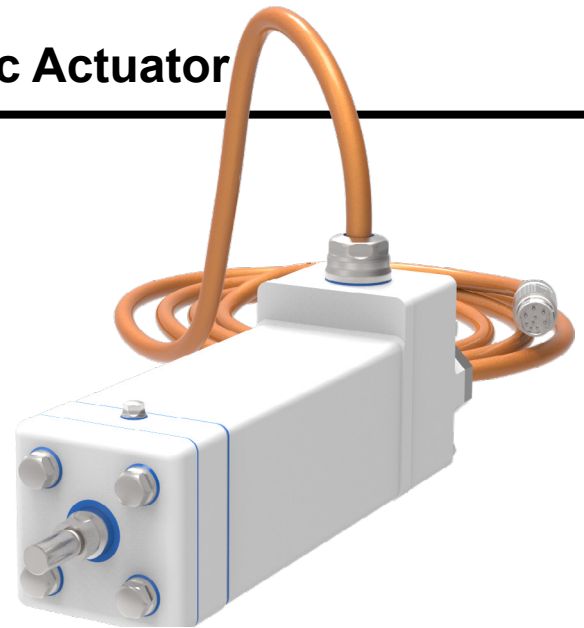
GTF Cost-Effective Hygienic Electric Actuator

The GTF extends Curtiss-Wright's popular high-force Exlar GTX linear actuators into applications that require hygienic machines in food & beverage, packaging, and pharmaceutical automation systems.

Offering flexible solutions coupled with low maintenance, the Exlar GTF provides proven reliability. The GTF food grade actuator mirrors the performance of Curtiss-Wright's standard Exlar GTX actuators and incorporates features to make it easier for machines to achieve hygienic certifications like [USDA, 3-A, BISSC, EHEDG, and NSF](#).

BENEFITS

- **Smooth surfaces** and FDA approved **white epoxy paint** reduces cleaning time and ensures machine certification
- **A stainless-steel main rod** provides corrosion resistance nearest to food contact zones
- **Different face mount and clevis mount versions** of the GTF actuator make it easier to meet hygienic design guidelines with different mounting configurations
- **An optional IP69K rating** provides additional protection when actuator is subjected to wash-down cleaning.
- **Food grade grease and seal materials** minimize contamination of food products.
- **Easy integration** with most servo drive systems
- **Three frame sizes** help match size and cost with required force
- **The Exlar inverted roller screw** provides much greater life and much lower maintenance than other screw technologies



SPECIFICATIONS

Product Basics

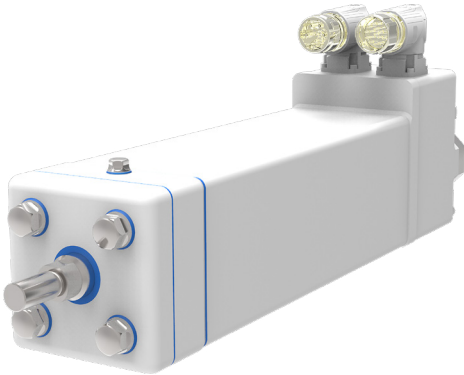
Model	Frame Size mm (in)	Nominal Stroke mm (in)	Peak Force N (lbf)	Continuous Force N (lbf)	Max Speed mm/s (in/s)
GTF060	60 (2.36)	80-300 (3.2-11.8)	5,336 (1200)	2,668 (600)	1270 (50)
GTF080	80 (3.15)	100-450 (3.9-17.7)	16,730 (3,762)	8,365 (1,881)	1270 (50)
GTF100	100 (3.94)	150-300 (5.9-11.8)	30,784 (6,920)	15,392 (3,460)	953 (37.5)

IP Rating: IP67 - IP69K with Cable Option

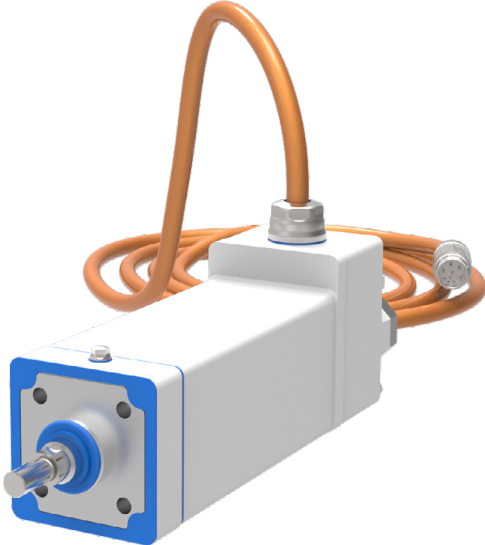
Designed to Meet Hygienic Standards

Designed for Different Mounting Methods

To help you save time and cost on hygienic machines, the GTF linear actuator is designed for two different mounting methods: face-mounting and rear-clevis mounting.



GTF Actuator with Hygienic Face Cover and IP67 M23 Connectors



GTF Actuator with Hygienic Face Mount and IP69K Single Cable Extension

Who We Are

We manufacture electromechanical linear roller screw actuators, rotary servomotors, and integrated control solutions for a broad range of applications. Our unique technology provides an efficient electric replacement for hydraulic or pneumatic cylinders and a more robust replacement for ball screws. With forces up to 80,000 pounds and speeds up to 60 inches per second, we are able to deliver higher force and speed in smaller

packages than other comparably sized actuation technology. Exlar actuators have more flexibility, higher efficiency, and lower maintenance than traditional hydraulic and pneumatic solutions. Whether looking to increase productivity or reduce your total cost of ownership, our actuators are the right solution for you.

Exlar® is a brand of the Curtiss-Wright Actuation Division.

