

## ER120

### Explosion-Proof Rotary Motor and Gearmotor

The Exlar® ER Series rotary explosion-proof servo motors and gearmotors provide an excellent solution for hazardous duty environments with constant exposure to flammable gasses or vapors. Exlar's motors utilizing T-LAM technology, an innovative segmented winding, have been designed for efficiency, power and durability and provide a very high torque-to-size ratio when compared to other suppliers' motors.

The gearmotor version integrates the T-LAM servo motor with an integral planetary gear set. Through the uniform load sharing of several gears acting in concert, planetary gear heads are a very compact, reliable solution providing high torque, low backlash, and low maintenance.

The ER Series actuators are ideal for operating quarter turn or multi-turn valves or shaft driven dampers in hazardous environments. These actuators are directly coupled to the load, eliminating ungainly mechanisms needed by the linear motion of pneumatics. Our compact T-LAM servo motors outperform any standard motor, providing excellent modulating service.

#### Typical Applications:

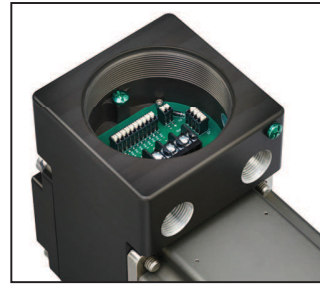
ER Series explosive-proof motors are well-suited to many applications such as:

Turbine Fuel Flow	Chemical Process Plants
Printing Presses	Fuel Distribution Systems
Engine Test Stands	Shipbound Fuel Management
Valve Control	Paint Booths
Damper Control	Fuel Skids

Exlar Actuation Solutions  
**Curtiss-Wright**  
 18400 West 77th Street  
 Chanhassen, MN 55317

Phone: 855.620.6200  
 FAX: 952.368.4877

[www.exlar.com](http://www.exlar.com)



IECEx CSA 14.0014X

SIRA 15ATEX1010X



0518



C US  
 163694

#### Features:

- Speeds up to 3000 RPM
- Up to 4,134 lb-in continuous torque
- T-LAM technology yielding 35% increase in continuous motor torque over traditional servo motors
- Feedback configurations for nearly any servo amplifier
- 1, 2, or 3 stack lengths
- Several mounting configurations
- Windings from 24 VDC to 460 VAC
- Class 180H insulation system
- CSA Class 1, Division 1, Group B,C, D, and T4 hazardous environment rating
- ATEX Ex d IIB+H2T4 Gb Certified
- IEC Ex d IIB+H2T4 Gb Certified
- IP65S environmental protection
- Threaded NPT ports with internal terminal strip for easy wiring.

## CURTISS - WRIGHT