

Radial Spherical Plain Bearings





Radial Spherical Plain Bearings GE..UK

Maintenance-free

03

Radial Spherical Plain Bearings G..PW

Maintenance-free

04

Radial Spherical Plain Bearings COM.. / HCOM..

Maintenance required, inch dimensions

05

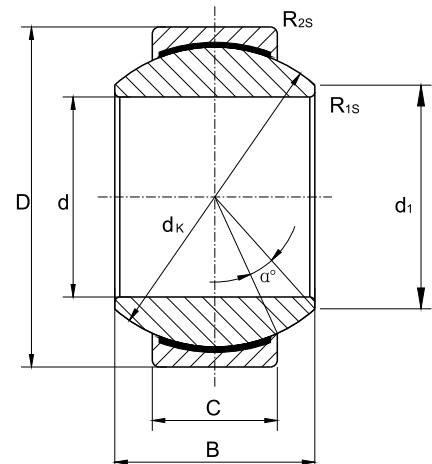
Radial Spherical Plain Bearings COM..T / HCOM..T

Maintenance-free, inch dimensions

06

Radial Spherical Plain Bearings GE..E / GE..ES / GE..ES-2RS

07



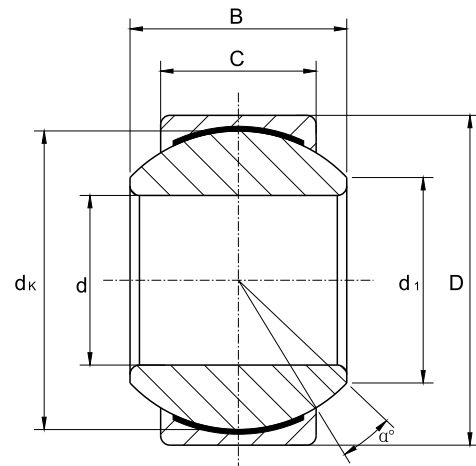
Part No.	Dimensions (mm)										Load ratings (KN)		Weight (kg)
	d	D	B	C	d ₁ min	d _k	R _{1s} min	R _{2s} min	α ≈	dyn. C	stat. C ₀	kg≈	
GE 6 UK	6	14	6	4	8	10	0.3	0.3	13	3.6	9.1	0.004	
GE 8 UK	8	16	8	5	10	13	0.3	0.3	15	5.8	14	0.008	
GE 10 UK	10	19	9	6	13	16	0.3	0.3	12	8.6	21	0.011	
GE 12 UK	12	22	10	7	15	18	0.3	0.3	10	11	28	0.015	
GE 15 UK	15	26	12	9	18	22	0.3	0.3	8	18	45	0.027	
GE 17 UK	17	30	14	10	20	25	0.3	0.3	10	22	56	0.041	
GE 20 UK	20	35	16	12	24	29	0.3	0.3	9	31	78	0.066	
GE 25 UK	25	42	20	16	29	35.5	0.6	0.6	7	51	127	0.119	
GE 30 UK	30	47	22	18	34	40.7	0.6	0.6	6	65	166	0.163	

- Sliding contact surfaces: steel / PTFE composite material.
- Outer ring is pressed around inner ring.
- Outer race is lined with PTFE composite material
- Spherical surface of inner ring is chromium plated.

Radial Spherical Plain Bearings - G..PW



MAINTENANCE-FREE



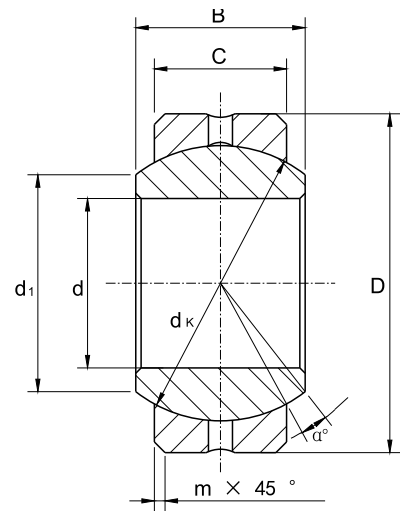
Part No.	Dimensions (mm)							Load ratings (KN)		Weight (kg) Kg≈
	d	d ₁	B	C	D	d _k	α	dyn. C	stat. C ₀	
G 5 PW	5	7.7	8	6	13	11.113	13	6.2	17	0.007
G 6 PW	6	8.9	9	6.75	16	12.700	13	7.5	22	0.010
G 8 PW	8	10.3	12	9	19	15.875	13	12	36	0.016
G 10 PW	10	12.9	14	10.5	22	19.050	13	17	50	0.031
G 12 PW	12	15.4	16	12	26	22.225	13	22	67	0.065
G 14 PW	14	16.8	19	13.5	28	25.400	15	28	86	0.090
G 16 PW	16	19.3	21	15	32	28.575	15	35	107	0.100
G 18 PW	18	21.8	23	16.5	35	31.750	15	47	131	0.125
G 20 PW	20	24.3	25	18	40	34.925	15	51	157	0.180
G 22 PW	22	25.8	28	20	42	38.100	15	62	191	0.210
G 25 PW	25	29.5	31	22	47	42.850	15	77	236	0.295
G 30 PW	30	34.8	37	25	55	50.800	15	103	318	0.425
G 35 PW	35	37.7	43	28	62	57.100	16	130	400	0.500
G 40 PW	40	45.2	49	33	75	66.600	17	179	550	0.900
G 50 PW	50	56.6	60	45	90	82.500	12	302	928	1.640

- Out ring in brass H62; steel ball in bearing steel GCr15 without chromium plating; out race is lined with PTFE composite material, the model is G..PW.
- If out ring in brass H62; steel ball in stainless steel 440C; out race is lined with PTFE composite material, the model is G..PWSS.
- If out ring in carbon steel 20; steel ball in bearing steel GCr15 without chromium plating; out race is lined with PTFE composite material, the model is ST..PW.
- If out ring in stainless steel 304, steel ball in stainless steel 440C; out race is lined with PTFE composite material, the model is SS..PW.

Radial Spherical Plain Bearings - COM.. / HCOM..



MAINTENANCE REQUIRED, INCH DIMENSIONS



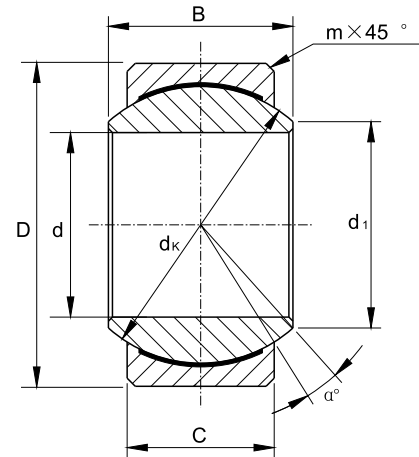
Part No.	Dimensions (mm)								Load ratings (KN)	Weight (kg)
	d	d ₁	B	C	D	d _k	m	α		Kg≈
COM 3	4.826	7.44	7.14	5.54	14.29	10.31	0.381	11	14.464	0.006
COM 4	6.350	9.25	8.71	6.35	16.67	12.70	0.560	13.5	22.015	0.010
COM 5	7.938	10.64	9.53	7.14	19.05	14.27	0.810	12	28.800	0.014
COM 6	9.525	13.11	10.31	7.92	20.64	16.66	0.810	10	37.361	0.017
COM 7	11.113	13.46	11.10	8.71	23.02	17.45	0.810	8.0	42.048	0.021
COM 8	12.700	16.26	12.70	9.91	25.40	20.65	0.810	9.5	58.934	0.029
COM 9	14.288	18.03	14.27	11.10	27.78	23.01	0.810	9.5	73.967	0.039
COM 10	15.875	19.81	15.88	12.70	30.16	25.40	0.810	8.5	94.658	0.050
COM 12	19.050	23.37	19.05	15.06	36.51	30.15	1.120	9.0	141.982	0.093
COM 14	22.225	24.89	22.23	17.86	39.69	33.32	1.120	9.5	186.639	0.119
COM 16	25.400	28.40	25.40	20.24	44.45	38.10	1.120	10	245.534	0.175
HCOM 16	25.400	34.54	25.40	19.84	50.80	42.85	0.810	9.0	315.010	0.251
HCOM 19	30.163	40.89	30.15	23.80	60.33	50.80	0.810	8.5	448.049	0.406
HCOM 20	31.750	40.89	30.15	23.80	60.33	50.80	0.810	8.5	448.049	0.406
HCOM 24	38.100	47.24	34.93	27.79	69.85	58.72	0.810	8.5	604.710	0.616
HCOM 28	44.450	53.59	39.67	31.75	79.38	66.68	1.120	8.0	784.495	0.884
HCOM 32	50.800	59.94	44.45	34.93	88.90	74.60	1.120	8.5	965.485	1.198

- Sliding contact surfaces: steel/ steel.
- Outer ring is carbon steel; Inner ring is bearing steel GCr1S with hard chrome plating.
- Outer ring is pressed around inner ring.
- Lubricating groove and holes in the outer ring.
- Dimensions in inches.

Radial Spherical Plain Bearings - COM..T / HCOM..T

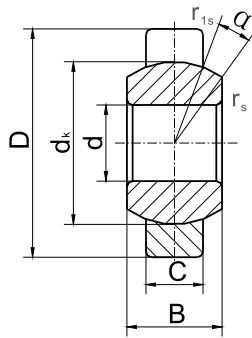


MAINTENANCE-FREE, INCH DIMENSIONS

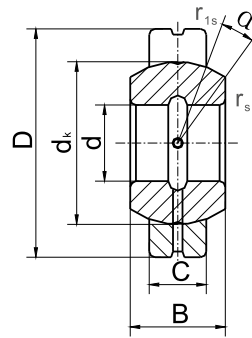


Part No.	Dimensions (mm)							Load ratings (KN)	Weight (kg)	
	d	d ₁	B	C	D	d _k	m			α
COM 3 T	4.826	7.44	7.14	5.54	14.29	10.31	0.381	11	21.68	0.006
COM 4 T	6.350	9.25	8.71	6.35	16.67	12.70	0.560	13.5	33.02	0.010
COM 5 T	7.938	10.64	9.53	7.14	19.05	14.27	0.810	12	43.20	0.014
COM 6 T	9.525	13.11	10.31	7.92	20.64	16.66	0.810	10	56.04	0.017
COM 7 T	11.113	13.46	11.10	8.71	23.02	17.45	0.810	8.0	63.07	0.021
COM 8 T	12.700	16.26	12.70	9.91	25.40	20.65	0.810	9.5	88.39	0.029
COM 9 T	14.288	18.03	14.27	11.10	27.78	23.01	0.810	9.5	110.94	0.039
COM 10 T	15.875	19.81	15.88	12.70	30.16	25.40	0.810	8.5	141.96	0.050
COM 12 T	19.050	23.37	19.05	15.06	36.51	30.15	1.120	9.0	212.94	0.093
COM 14 T	22.225	24.89	22.23	17.86	39.69	33.32	1.120	9.5	279.93	0.119
COM 16 T	25.400	28.40	25.40	20.24	44.45	38.10	1.120	10	368.25	0.175
HCOM 16 T	25.400	34.54	25.40	19.84	50.80	42.85	0.810	9.0	472.46	0.251
HCOM 19 T	30.163	40.89	30.15	23.80	60.33	50.80	0.810	8.5	672.00	0.406
HCOM 20 T	31.750	40.89	30.15	23.80	60.33	50.80	0.810	8.5	672.00	0.406
HCOM 24 T	38.100	47.24	34.93	27.79	69.85	58.72	0.810	8.5	906.96	0.616
HCOM 28 T	44.450	53.59	39.67	31.75	79.38	66.68	1.120	8.0	1176.61	0.884
HCOM 32 T	50.800	59.94	44.45	34.93	88.90	74.60	1.120	8.5	1448.06	1.198

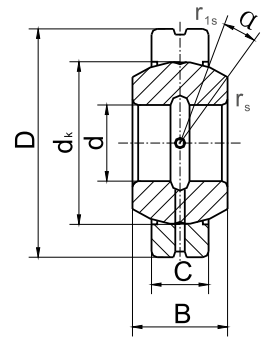
- Sliding contact surfaces: steel / PTFE composite material.
- Outer ring is carbon steel; Inner ring is bearing steel GCr15 with hard chrome plating.
- Outer ring is pressed around inner ring.
- Outer race lined with PTFE composite material.
- Dimensions in inches.



GE..E



GE..ES



GE..ES-2RS

Part No.	Dimensions (mm)								Load ratings (KN)		Weight (kg)	
	d	D	B	C	dk	rs min	r1s min	α ≈	Dynamic	Static		
GE4E	4	12	5	3	8	0.3	0.3	16	2	10	0.003	
GE5E	5	14	6	4	10	0.3	0.3	13	3.4	17	0.005	
GE6E	6	14	6	4	10	0.3	0.3	13	3.4	17	0.004	
GE8E	8	16	8	5	13	0.3	0.3	15	5.5	27	0.008	
GE10E	10	19	9	6	16	0.3	0.3	12	8.1	40	0.011	
GE12E	12	22	10	7	18	0.3	0.3	10	10	53	0.015	
GE15ES	GE15ES-2RS	15	26	12	9	22	0.3	0.3	8	16	84	0.027
GE17ES	GE17ES-2RS	17	30	14	10	25	0.3	0.3	10	21	106	0.041
GE20ES	GE20ES-2RS	20	35	16	12	29	0.3	0.3	9	30	146	0.066
GE25ES	GE25ES-2RS	25	42	20	16	35.5	0.6	0.6	7	48	240	0.119
GE30ES	GE30ES-2RS	30	47	22	18	40.7	0.6	0.6	6	62	310	0.153
GE35ES	GE35ES-2RS	35	55	25	20	47	0.6	1	6	79	399	0.233
GE40ES	GE40ES-2RS	40	62	28	22	53	0.6	1	7	99	495	0.306
GE45ES	GE45ES-2RS	45	68	32	25	60	0.6	1	7	127	637	0.427
GE50ES	GE50ES-2RS	50	75	35	28	66	0.6	1	6	156	780	0.546
GE55ES	GE55ES-2RS	55	85	40	32	74	0.6	1	7	200	1000	0.939
GE60ES	GE60ES-2RS	60	90	44	36	80	1	1	6	245	1220	1.040
GE70ES	GE70ES-2RS	70	105	49	40	92	1	1	6	313	1560	1.550
GE80ES	GE80ES-2RS	80	120	55	45	105	1	1	6	400	2000	2.310
GE90ES	GE90ES-2RS	90	130	60	50	115	1	1	5	488	2440	2.750
GE100ES	GE100ES-2RS	100	150	70	55	130	1	1	7	607	3030	4.450
GE110ES	GE110ES-2RS	110	160	70	55	140	1	1	6	654	3270	4.820
GE120ES	GE120ES-2RS	120	180	85	70	160	1	1	6	950	4750	8.050
GE140ES	GE140ES-2RS	140	210	90	70	180	1	1	7	1070	5350	11.020
GE160ES	GE160ES-2RS	160	230	105	80	200	1	1	8	1360	6800	14.010
GE180ES	GE180ES-2RS	180	260	105	80	225	1.1	1.1	6	1530	7650	18.650
GE200ES	GE200ES-2RS	200	290	130	100	250	1.1	1.1	7	2120	10600	28.030

- Sliding contact surfaces: steel / steel
- Both outer and inner rings are ball bearing steels, with proper phosphate treatment.
- Outer ring with single split in axial direction.
- Lubricating grooves and holes in the outer and inner rings of type ES.
- Outer ring of type 2RS with lip seals in both sides.



Clevises - Rod Ends - Ball Joints

Authorized distributor



www.bonnekamp.nl