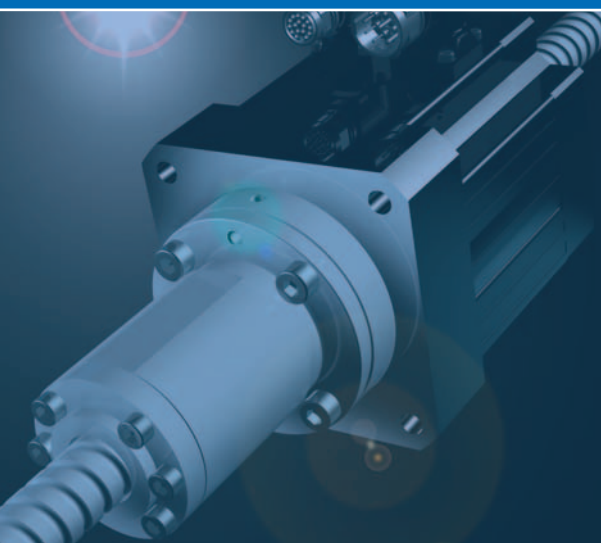


EZS and EZM Synchronous Servo Motors for Screw Drives



For high-precision
direct drive of the
screw or screw nut



STÖBER

The latest servo technology for ball screw drives

For screws of your choice

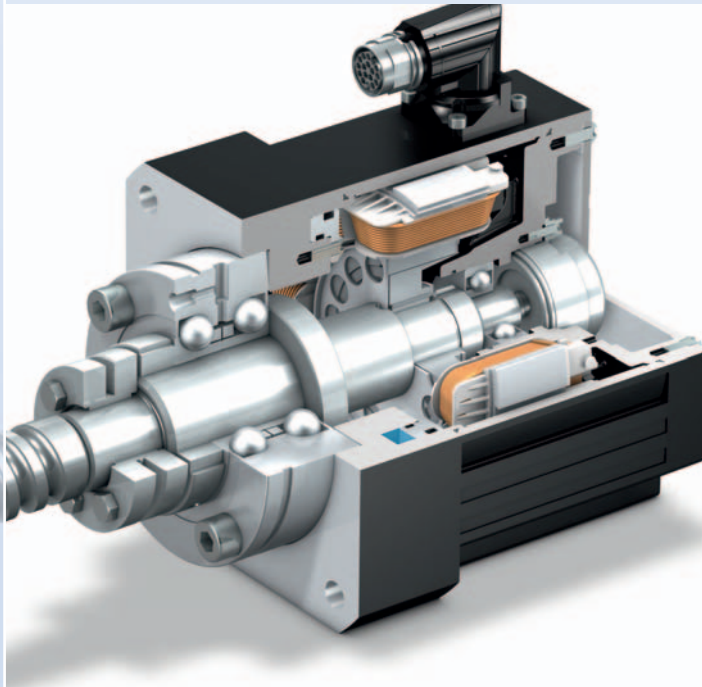
The universal, super compact STOBER spindle motors are designed for mounting on spindles from different manufacturers.

For individual solutions

To be able to serve a wide range of applications, STOBER synchronous servo motors for screw drives EZS and EZM are available in 2 sizes each with 3 power output stages.

All synchronous servo motors for screw drives are available with brakes.

Fully integrated water cooling or cooling using an external fan can be selected as an option.



High-efficiency motor engineering

STOBER synchronous servo motors for screw drives provide an extraordinary high power per unit volume.

The basis for this is the industrial realization of a tooth winding in orthocyclic linear winding technology.

This high-quality winding technology makes it possible to produce stator windings with the highest possible copper fill factor.

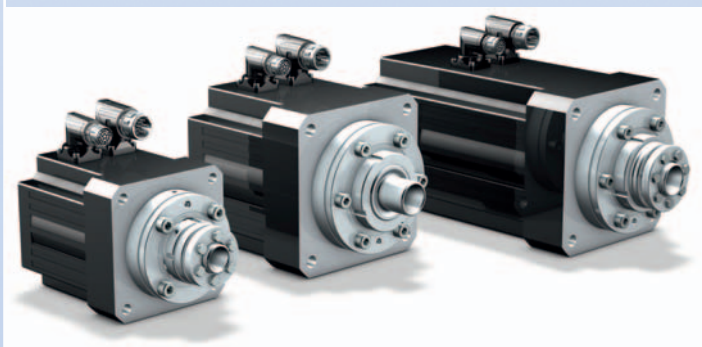
This winding technology increases the motor power output by approx. 80 %.

Direct drive for rotating screw shafts

The STOBER EZS synchronous servo motor for screw drive has been specially developed for ball screw drives with a rotating screw shaft.

The motor shaft is in the form of a blind hole hollow shaft. The screw rod and motor shaft can be connected with a clamping set.

STOBER EZS 501 synchronous servo motor for screw drive with axial angular contact ball bearings to absorb the high axial forces from the ball screw drive.



Microsection of an orthocyclically wound motor coil.

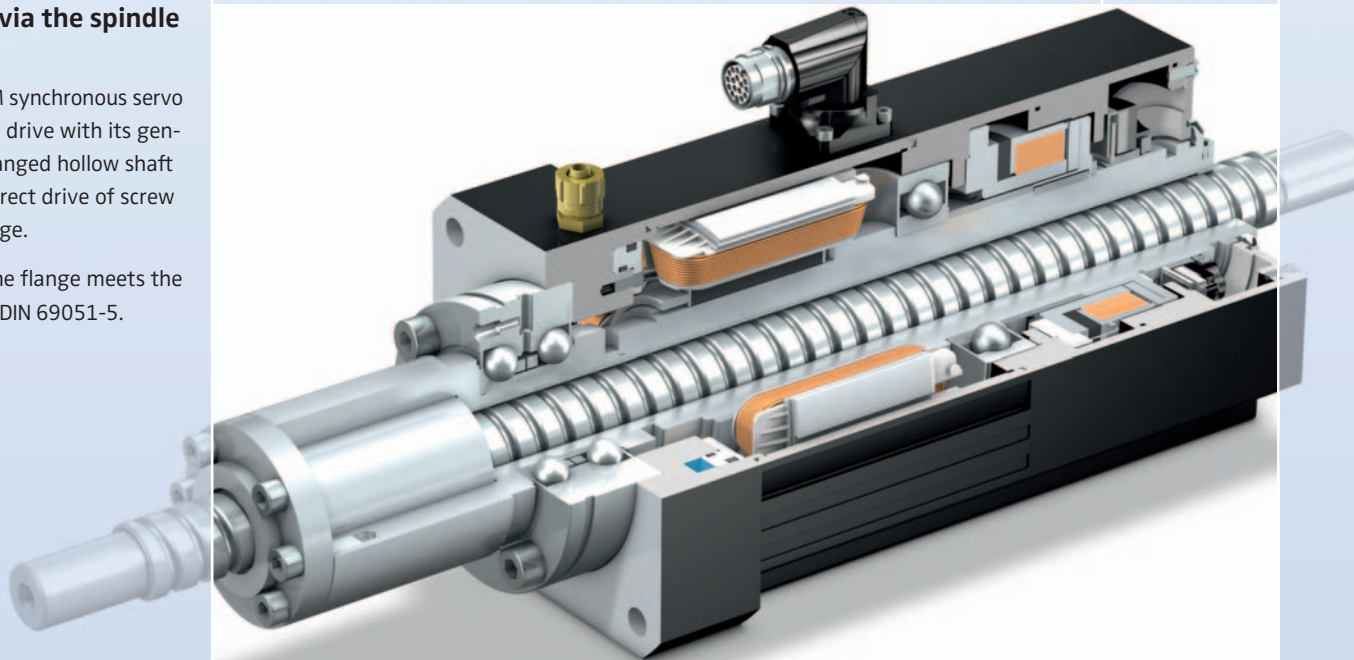
STOBER synchronous servo motor for screw drive EZS 501, EZS 701 without clamping unit, EZS 703 with brake (from left to right).

For direct drive of the screw nut

Direct drive via the spindle motors

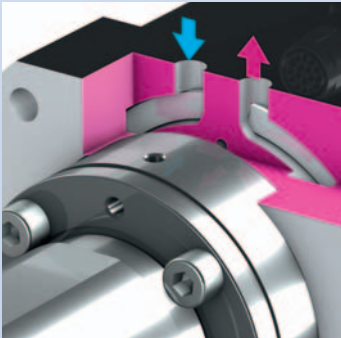
The STÖBER EZM synchronous servo motor for screw drive with its generously sized flanged hollow shaft is suitable for direct drive of screw nuts with a flange.

The design of the flange meets the requirements of DIN 69051-5.

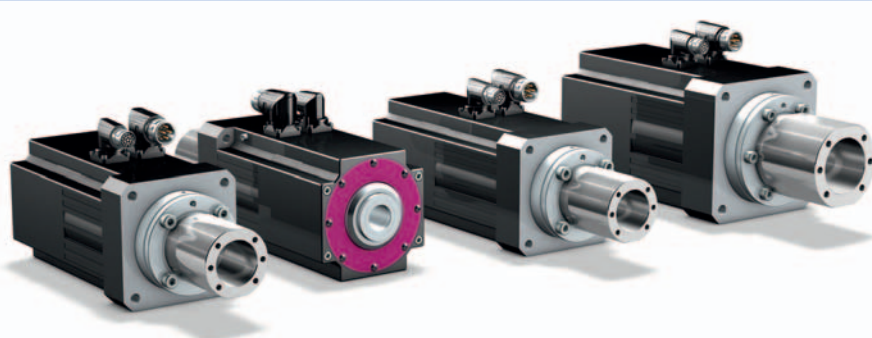


STÖBER synchronous servo motor for screw drive EZM 512 with liquid cooling, brake and EnDat® singleturn absolute encoder feedback system.

With axial angular contact ball bearing to absorb the high axial forces from the ball screw drive. Flanged hollow shafts for different nut designs on request.



Cross-section: Liquid cooling channel.



STÖBER synchronous servo motor for screw drive EZM 511 with brake, EZM 511 with brake on rear, EZM 512 with brake, EZM 711 with brake (from left to right).

Energy-efficiency in drive technology

The basis for successful energy efficiency is the clarification of the exact requirement



for mechanical power. During the design of the synchronous servo geared motor, an excessive 'safety margin' should not be applied.

If motors with over-dimensioned power reserves are used, they will continuously operate below their power rating. In the context of energy efficiency this situation is counter-productive. In addition to the low efficiency with unutilized power consumption there are poor control characteristics, higher procurement costs and possibly unnecessary problems with excessive weight.

STOBER experts would be pleased to advise you on the dimensioning of your drive axes.

Energy optimized processes

Motion control and axis regulation are to be included in a holistic energy efficiency assessment of a machine or automation system.

Specific knowledge of drive controller functionality and software functionality as provided at STOBER trainings makes it possible to finely tune the axis control to exploit all the efficiency potential.

STOBER AUSTRIA
www.stober.at
+43 7613 7600-0
sales@stober.at

STOBER CHINA
www.stober.cn
+86 10 6590 7391
sales@stober.cn

STOBER FRANCE
www.stober.fr
+33 4 78.98.91.80
sales@stober.fr

STOBER GERMANY
www.stober.de
+49 7231 582-0
sales@stober.de

STOBER ITALY
www.stober.it
+39 02 93909570
sales@stober.it

STOBER JAPAN
www.stober.co.jp
+81 3 5395 6788
sales@stober.co.jp

STOBER SOUTH EAST ASIA
www.stober.sg
+65 65112912
sales@stober.sg

STOBER SWITZERLAND
www.stober.ch
+41 56 496 96 50
sales@stober.ch

STOBER TAIWAN
www.stober.tw
+886 2 2216 3428
sales@stober.tw

STOBER TURKEY
www.stober.com
+90 212 338 80 14
sales-turkey@stober.com

STOBER UNITED KINGDOM
www.stober.co.uk
+44 1543 458 858
sales@stober.co.uk

STOBER USA
www.stober.com
+1 606 759 5090
sales@stober.com

Service

The STOBER service system includes 38 skilled partners in Germany and more than 80 organizations worldwide in the STOBER SERVICE NETWORK.

STOBER service specialists can be reached 24/7 and can support you with expertise and assistance if service is required on-site or guide you through appropriate immediate measures on the telephone.

In addition STOBER offers maintenance by remote access for its drive controllers.

24/7 service hotline
+49 180 5 786323

(14 cents/min. on German landline,
max. 42 cents/min. on mobile networks)



STÖBER